

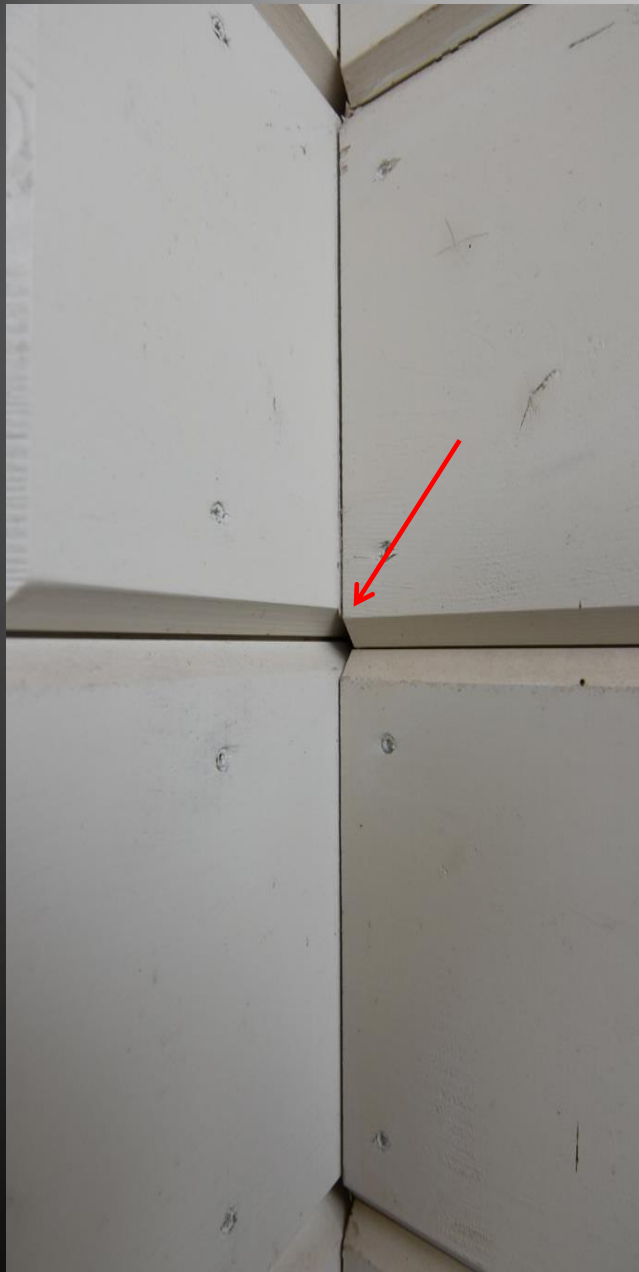
9 MONUMENTS OF WOODEN ARCHITECTURE IN LITHUANIA

ILLUSTRATED SURVEY
OCTOBER 2017

PICTURES BY PĒTERIS BLŪMS

BY PĒTERIS BLŪMS,
ARCHITECT, CERT. NR. LAS 10-0631, LATVIA

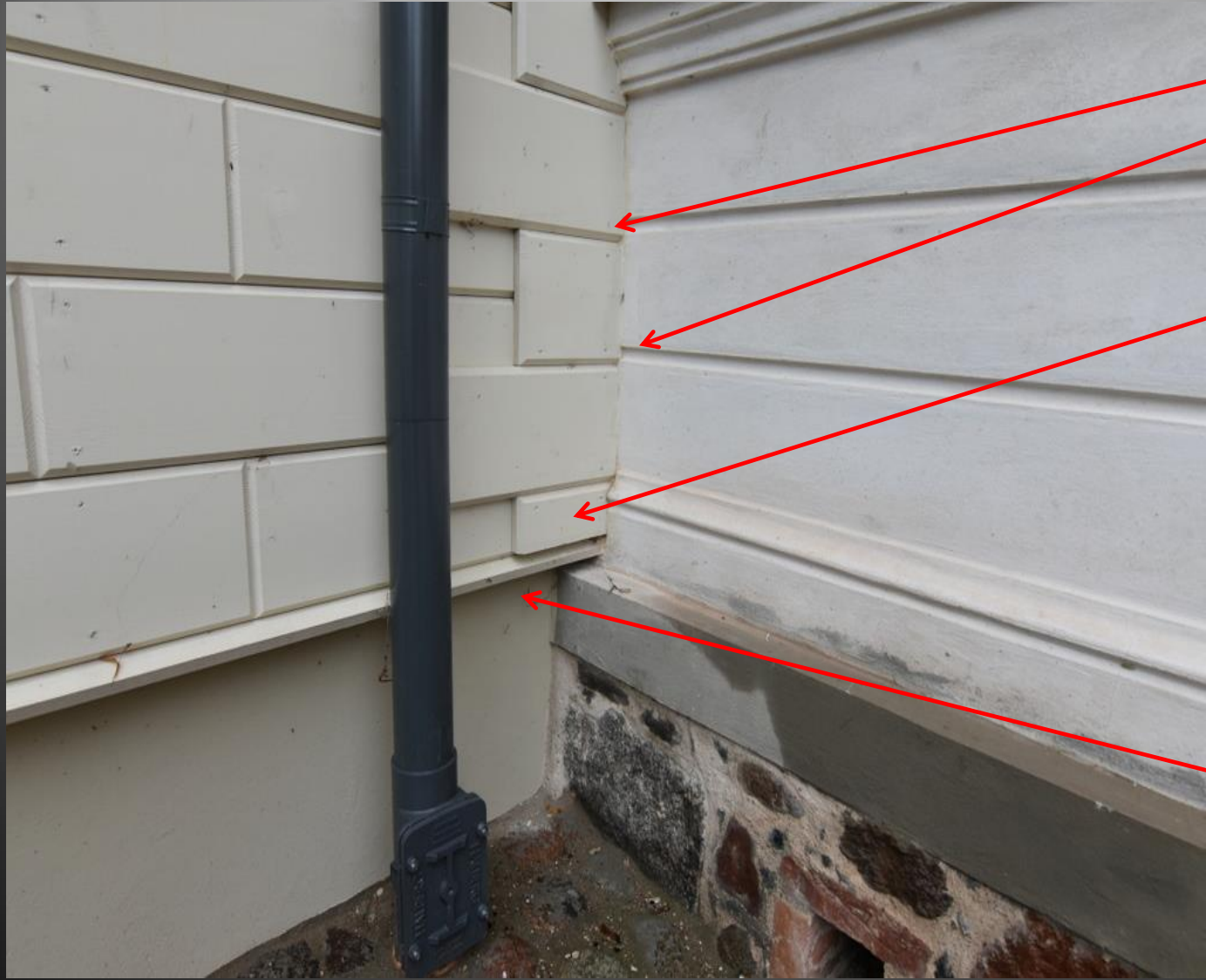
AMBROMIŠKES MANOR



FASTENING
SKREW HEADS
ARE TOO
SHALLOW

THE
CONNECTIONS
BETWEEN
RUSTICA PLATES
ARE NOT PRECISE





THE CONNECTION LINES BETWEEN RUSTICA PLATES ARE NOT PRECISE

THE FIRST RUSTICA PLATE IS NOT IN A PROPER PROPORTION

THE FOUNDATION SURFACE IS TOO "DEEP" IN RELATION TO WOODEN FACADE SURFACE, IN THE CORNER ARE SOME JOINT MISTAKES

ALL WALLS IN THE BUILDING
HAVE MASONRY SURFACES.





THE LONG, REINFORCED BEAMS ARE SLIGHTLY CURVED.



THE INSULATION FOIL IS MISSING

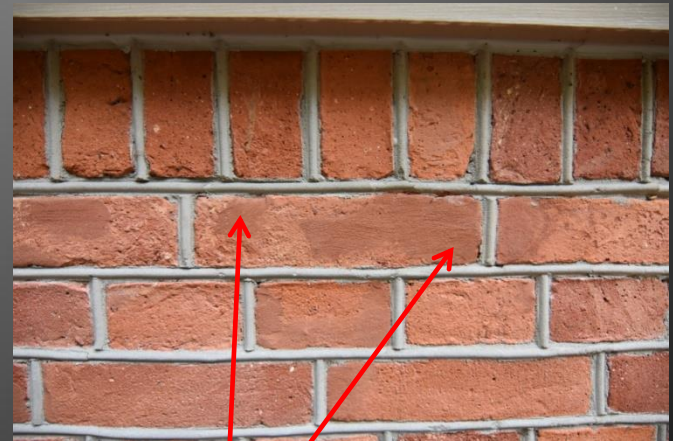
VILLA ANAPILIS

THE GENERAL IMPRESSION OF THE RESTORATION WORKS IS POSITIVE





GOOD QUALITY OF:
MASONRY AND MORTAR
JOINTS RESTORATION ,
BRICK LOSS FILLING AND
TONING



FILLING, TONING



THE INTERIORS ARE HOMOGENEOUS, THE PRESENCE OF AUTHENTIC ARTEFACTS IS DIFFICULT TO FEEL. THE PAINTING JOBS ARE DONE WITH CONTEMPORARY METHODS.



THE INTERIORS ARE
HOMOGENEOUS -
PRESENCE OF
AUTHENTIC
ARTEFACTS IS
DIFFICULT TO FEEL.



THE BIG VERANDAH IS A COMFORTIBLE AND CONTEMPORARY HALL, WHAT IS GOOD FOR THE MUSEUM, BUT IT IS NOT RESTORATION.



THE LOGGIA AT THE ENTRANCE IS THE MOST AUTHENTIC PLACE IN THE BUILDING



THE ATTIC HAS COMPLETELY NEW WINDOWS,
BUT THE CONDITION OF THE ORIGINAL ONE IS
GOOD . THIS FRAME (AS IT IS) IS WORTH TO
PUT INTO THE EXPOSITION

ARISTAVELE MANOR



THE VISUAL IMPRESSION OF OUTER APPEARANCE OF ARISTAVELE MANOR IS AUTHENTIC - NO DOUBT. PICTURES BEFORE FACADE PLANKING GIVE AN EVIDENCE FOR PROPORTION OF ORIGINAL SUBSTANCE.



<https://www.miestai.net/forumas/forum/bendrosios-diskusijos/miestai-ir-architekt%C5%ABra/dvarai-ir-pilva/13891-aristavos-ir-aristav%C4%97%C4%97s-dvarai-ir%C4%97daini%C5%B3-r>

<http://www.diena.lt/sites/default/files/styles/940x000/public/vr169185.jpg?itok=eYOUFFA8>

ORIGINAL
OBJECTS AND
MATERIALS -
DOORS, PLANKS,
COLUMNS ARE
USED FOR THE
RESTORATION



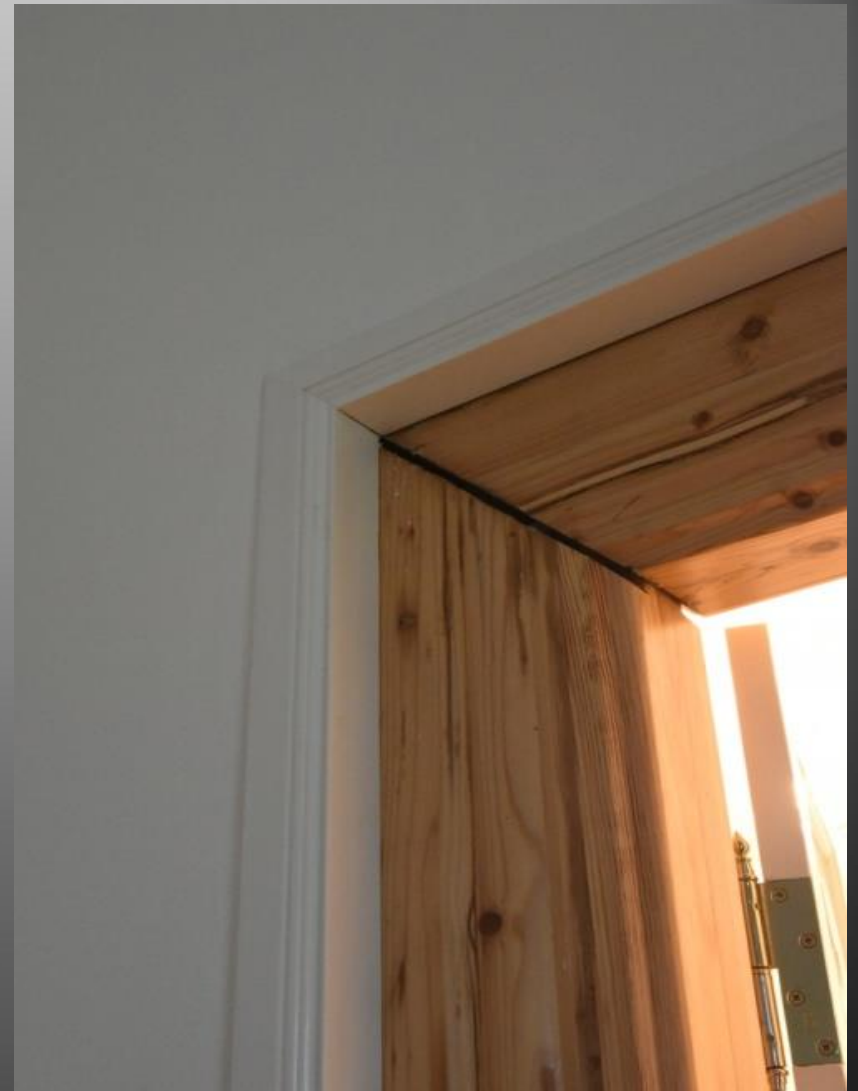
THE ACCENTED NEW STAIRS IN THE ENTRANCE HALL IS A GOOD EXAMPLE OF CONTEMPORARY CARPENTRY (UNFORTUNATELY, WITH SOME ERRORS OF HANDRAILING CONFIGUARTION). PERHAPS PAINTED STAIRS WOULD BE MORE "CALM"?



GOOD QUALITY BRASS HINGES WITH PROFILED HEADINGS



THE ONLY EVIDENCE FOR AUTHENTICITY OF ORIGINAL DOORS. BECAUSE THE NEWLY PAINTED SURFACE IS A BIT TOO SMOOTH AND PERFECT. MAYBE THE FRAME AND LAYERS OF EXPOSED STRATIGRAPHY SHOULD BE MORE PRECISE



SMART EXPOSITIONS OF ORIGINAL, UNIQUE
WINDOW AND DOOR CONSTRUCTIONS

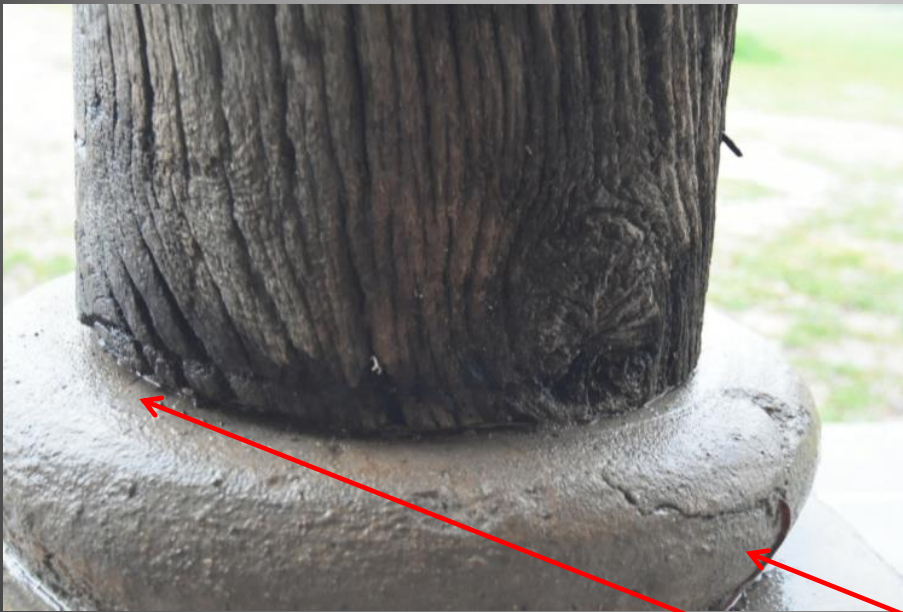


HIGH LEVEL OF ORIGINAL ROOF
CONSTRUCTION AUTHENTICITY,
GOOD PROFESSIONAL CARPENTRY,
JOINTS



PLEASE, CHECK THE REASON
FOR POWDER-LIKE
SUBSTANCE ON THE FLOOR
OF ATTIC





PREFECT KONCEPT OF AUTHENTICITY – USE OF ORIGINAL COLUMNS AT THE ENTRANCE PORCH! AN EXCELLENT EVIDENCE WHICH DOES NOT ALLOW DOUBT FOR THE TRUTH.



THERE ARE PROBLEMS OF HUMIDITY AND LOW QUALITY OF CONCRETE BASIS OF THE COLUMNS

MUSTEIKA VILLAGE



GINATARAS AVERKA HOMESTEAD

NECESSARY MAINTENANCE WORKS ARE WELL DONE. MAYBE SOME TONING OF “WHITE” NEW PLANKS SURFACE WITH ORGANIC PICKLING WOULD BE A GOOD WAY TO “CALM DOWN” THE CONTRASTS.



IN SEVERAL BUILDINGS - ERROR IN ROOFING CONSTRUCTION AND AS A RESULT - CUTTING OF THE ORIGINAL RAFTERS DONE.

IRENA ULEKULL HOMESTEAD

ABSOLUTELY INAPPROPRIATE METHOD OF PROSTHESATION OF DAMAGED LOG PARTS –
FORM, SIZE, SURFACE, JOINTS!

THE PLANKS IN THE GABLE SHOULD BE IN
FULL LENGTH, NOT CUT





“IVANAUSKAS” SCHOOL

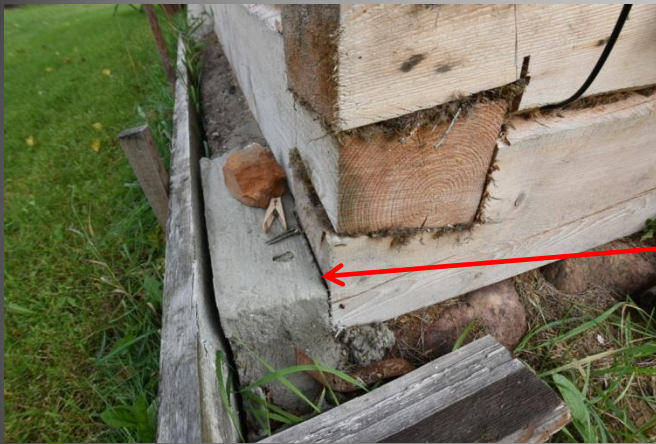
QUALITY OF PRESERVATION WORKS IS GOOD, BUT TONING OF NEW WOOD SURFACES IS ADVISIBLE.

PLASTERING WITH CLAY IS A VERY GOOD SOLUTION.

HOPEFULLY THE HYDRO INSULATION IS THERE!
CARPENTRY WORKS ARE WELL DONE !



KILIMANAVIČIUS FARMSTEAD



THERE IS RISK OF WATER DAMAGES



IT SEEMS THERE IS NO HYDRO INSULATION
BETWEEN CONCRETE AND WOOD.
ARE LOGS TREATED AGAINST
BIODEGRADATION?

STANISLAVA GRIGIENE FARMSTEAD

PERFECT AUTHENTICITY!



VALUABLE EXPERIENCE TO PRESERVE
THE OLD, AUTHENTIC ROOFING LAYER
AS A PRIVATE FAMILY MEMORY!
EXCELLENT!

STEPULEI FARMSTEAD

GOOD EXAMPLES OF AUTHENTIC REPAIRS OF LOG BUILDING AND WINDOW MAINTENANCE/ REPAIRS AS WELL AS RECONSTRUCTION OF AUTHENTIC VERANDAH.





AT SEVERAL BUILDINGS THE HEIGHT BETWEEN THE SOIL AND FIRST LOG IS MUCH TOO LOW. IN SOME CASES LOGS ARE DIRECTLY ON THE SOIL SURFACE. IN ALL THESE SITUATIONS THE LIFE TIME OF WOOD WILL BE VERY SHORT. THERE ARE WORKS NOT COMPLETED, POOR QUALITY AS WELL.

MAXIMUM AUTHENTICITY OF
NEW AND ORIGINAL
SUBSTANCE





VERY TRUE AND HONEST SURFACES



ZYMANTAS
MORKVENAS

GENUINE, TRUE
SURFACE OF AN
OLD, CAREFULLY
MAINTAINED
COUNTRYHOUSE
DOOR AND FLOOR



GOOD SCHOOL
FOR RESTORERS,
SCIENTISTS,
EXPERTS – WHAT IS
LIVING
AUTHENTICITY



REAL PLACE FOR KIDS TO SLEEP ON TOP OF THE BREAD OVEN IN THE FAMILY COUNTRY HOUSE – THE PAST TODAY.
LIVING HISTORY.

SYNAGOGUE IN PAKRUOJIS

SYNAGOGUE IN PAKRUOJIS



WELL DONE SAVING AND CONSERVATION OF THE HISTORICAL SYNAGOGUE. THE PREVIOUS TECHNICAL CONDITION AFTER THE FIRE WAS CRITICAL.

A GOOD EXAMPLE OF AUTHENTICITY CONCEPT, WHERE FEW ORIGINAL ELEMENTS, SMARTLY AND EXCELLENTLY EXPOSED ON THE FACADE, CREATE TRUST FOR AUTHENTICITY OF THE WHOLE FACADE AND WHOLE BUILDING AS WELL.

WOODEN IMPLANTS OF MISSING PARTS WELL DONE, LIGHTLY COLORED TO SHOW THE WHOLE AS ONE UNIT, NOT TO ACCENT SOME SMALL, INSIGNIFICANT DETAILS.





GOOD EXPOSITION
OF ORIGINAL
WINDOW FRAME

THE WOODEN VAULT PAINTING DONE WITH PERFECT UNDERSTANDING OF
TIME, PREVIOUS AUTHORS, CREATING PICTURE AND SURFACE WHICH LIVES





ALL PARAMETERS OF THE RAMP AND THE COVERING MATERIAL OF THE PASSAGE CANNOT BE USED BY WHEELCHAIR USERS.



THIS WAY TO DISPLAY THE INFORMATION IS COMMON, BUT MAYBE NOT THE BEST ONE FOR CULTURAL MONUMENTS OF GREAT, INTERNATIONAL IMPORTANCE



FLOOR LACQUERING TOO GLOSSY!

THE NEW WOODEN SURFACES TOO ACTIVE!

TOO MANY ACCESORIES FOR ONE WALL.

LINSEED OIL PUTTY NOT USED, MUNTINS TOO MASSIVE!



THERE IS A GAP OF SHRINKAGE BETWEEN PLANKS WHICH WILL BECOME WIDER. DOWN IN THE GAP THERE IS ALUMINIUM FOIL VISIBLE. SOLUTIONS NEEDED.

PAVIRVYTE MANOR



THE GENERAL IMPRESSION OF THE NEW FACADES IS GOOD, AUTHENTIC WIDTH OF PLANKS USED. THE GEOMETRY AND TYPE OF NEW WINDOWS IS CORRECT.

GOOD RESTORATION OF THE TYPICAL SURFACE OF THE FOUNDATION.



SEVERAL WINDOW SHUTTERS HAVE PROBLEMS WITH THE GLUED JOINT - THE GLUE DOES NOT KEEP THEM TOGETHER MAYBE NOT PROPER GLUE USED?

THERE WILL BE SOME PROBLEMS WITH NAIL-HEAD RUSTING. EVEN UNDER THE PAINT LAYER THEY SHOW SIGNS OF RUST.

PROPER FORM OF THE SCREW HEADS USED!

THE BASIC SURFACE OF THE «BLIND WINDOW» IS TOO SMOOTH, STRANGE, NOT AUTHENTIC. PLEASE, COMPARE WITH A PICTURE FROM THE CONDITION BEFORE DISMANTLING!





THE PLACES OF NAILING ARE «CRYING» WITH BLACK TEARS – THE SIGN OF RUST PROCESS. THE IRON OF NAILS CONSISTS OF MORE ADMIXTURES THAN IN THE 19TH CENTURY. PERHAPS IT COULD HELP TO USE WARM LINSEED OIL TREATMENT FOR THE FACADE AND FOR NAIL-HEADS TWICE.



THE INSULTAION LAYER SHOULD NOT BE FINISHED LIKE HERE. PLANKS ARE NOT TREATED ENOUGH. IN SUCH SITUATIONS IT IS ADVISIBLE TO USE A SHEET OF 9 MM PLAYWOOD FIXED UNDER THE WOODEN PLANKS, BETWEEN WOOD AND STONE. ADVISIBLE DISTANCE 15 – 20 MM BETWEEN WOOD AND STONE.



DISPLAYING OF ORIGINAL MATERIALS IN HISTORIC BUILDINGS IS A NECESSARY AND WELCOMING PRACTICE. ANOTHER QUESTION IS HOW THE EXPOSURE OF THESE ARTEFACTS CORRESPONDS TO INTERIORS, HOW IT AFFECTS THE PERCEPTION OF THE PREMISES - WHETHER IT'S A RANDOM PLACE, SIZE, CONTEXT OR CHOICE OF UNIQUE OUTCROP OF ORIGINAL MATERIAL, SERVED AS AN ELEMENT OF INTERIOR DESIGN, COMPOSITION, LIGHTING SCENARIO E.T.C..



QUALITATIVE, CONCEPTUAL LIGHTING IS A PROBLEM OF MANY INTERIORS. GOOD CHOICE OF LIGHT ELEMENTS FOR THE INTERIOR GIVE NOT LESS THAN 1/3 OF THE TOTAL IMPRESSION. FOR AN INTERIOR THE MOST IMPORTANT IS THE PLANNING OF LIGHT DIVERSITY, EXPRESSION. LIGHT ACCENTS FOCUSING ON AUTHENTIC OBJECTS ARE MORE IMPORTANT THAN PURCHASING ONE DOMINANT LIGHT BODY.

THE SOUL OF THINGS LIVES IN LIGHT SHADOWS.



SEE DESCRIPTION A IN
SLIDE 42.

THE OUTCROP IS
PLACED NOT IN
ACCORDANCE WITH
OTHER ELEMENTS OF
THE INTERIOR – WHY IS
IT TOO HIGH?

WHY IS IT NOT BIGGER
OR BIG?

A SMART LIGHT ACCENT
COULD MAKE THE
UNIQUE SURFACE “MORE
VALUABLE” AND
“IMPORTANT”. LET’S
THINK ABOUT IT LIKE A N
ANTIQUE ARTWORK!



IT IS NOT POSSIBLE TO RECOGNIZE – IS THIS STAIR ORIGINAL OR COPY?
WHY THE SURFACE OF THE STEPS IS EXCHANGED?
PERHAPS IT WOULD BE BETTER JUST TO REPAIR THEM WHERE BROKEN AND WASH 2 -3 TIMES THOROUGHLY?





THE HUMIDITY IN THE BASEMENT IS VERY HIGH, ALL IRON COMPONENTS ARE SHOWING INTENSIVE RUST .

WHEN IT RAINS, WATER FLOWS THROUGH FOUNDATIONS INTO THE CELLAR





VERY GOOD EXAMPLE
OF A SPECIFIC WAY
TO INSTALL HINGES.
PROPER TYPE OF
SCREWS AND HINGES
USED.

ORIGINAL DOOR SET
SAVED.



GOOD AND
EDUCATIVE
EXPOSITION OF
ARTEFACTS OF THE
SITE.



THE MOST AUTHENTIC PLACE AND TRUE FEELING OF THE OLD HOUSE!

EVERYBODY CAN SEE AND BE SURE – THIS PLACE IS REALLY TRUE!

THE AUTHENTICITY LEVEL OF THE ATTIC IS VERY HIGH!

IT IS RECOMMENDED TO INSTALL APPROPRIATE FLOORS, LIGHTING OF GOOD QUALITY, NOT DISTURBING,
ACCENTING AUTHENTICITY.

VILLA IN PREILA



THE IMPRESSION FOR THE FACADES IS GOOD.

THE EXPOSITION OF ARTEFACTS, DETAILS AND SAVED CONSTRUCTIONS IS DEMONSTRATIVE AND EDUCATIVE.



THE PREMISES OF THE UPPER FLOOR ARE BUILT AS GUEST ROOMS
WITH GOOD TASTE, CONTEMPORARY NORDIC STYLE, GOOD
BUILDING QUALITY.



THE SURFACE OF SOME WOODEN DETAILS DURING THE CONSTRUCTION PHASE ARE TREATED IN A PRIMITIVE WAY.

THE OUTBRAKES ON THE DOOR ARE NOT DONE ACCORDING TO PRINCIPLES OF ARTISTIC RESEARCH AND GOOD PRAXIS IN RESTORATION .

ALL THE NEW WINDOWS ARE MANUFACTURED ACCORDING TO THE TYPE OF ORIGINALS, USING MORE OR LESS SIMILAR FITTINGS. LINSEED OIL PUTTY FOR GLAZING IS NOT USED.





ORIGINAL FACADE DETAILS SAVED
DURING DISMANTLING SHOW
GOOD QUALITY OF WOOD. WHY
WERE THEY NOT USED AGAIN IN
THE SAME PLACES?





THE CREATED FEELING OF INTERIORS IS MORE CONTEMPORARY THAN AUTHENTIC. DOOR BORDER PROFILES, FLOORS, LISTS, LIGHT, TECHNIQUE OF PAINTING AND SURFACES, DETAILS AND FIXTURES SUMMING UP IN A FEELING OF SOMETHING "NEW AND COMMON".

THE SHAPE AND SIZE OF WINDOW MUNTINS IS TOO ROBUST BECAUSE OF THE USED WOODEN PROFILES INSTEAD OF AUTHENTIC, DELICATE PROFILES AND LINSEED OIL PUTTY.

ZERVYNOS VILLAGE



REMARKS IN THE FOLLOWING IMAGES WILL SHOW SEVERAL ERRORS AND LOSSES.

AT THIS STAGE THEY STILL DO NOT THREATEN THE AUTHENTICITY OF THE SITE. AT THE SAME TIME, AN INCREASE OF PROBLEMS IN NUMBER AND DIVERSITY COULD SERIOUSLY AFFECT THE VALUE OF THE SITE.

THIS COULD BE IMPROVED BY ADITONAL TRAINIG AND CONTINUOUS COOPERATION AMONG PROCESS PARTICIPANTS.

THE GENERAL IMPRESSION OF THE ZERVYNOS VILLAGE IS REALLY GREAT, INEFFACEABLE!





ALL WINDOWS AND SHUTTERS ARE MADE NEW. ORIGINAL WINDOWS ARE STILL STACKED IN THE YARD AND - THEY ARE NOT IN A CRITICAL CONDITION!
WHY WERE THEY NOT RESTORED?

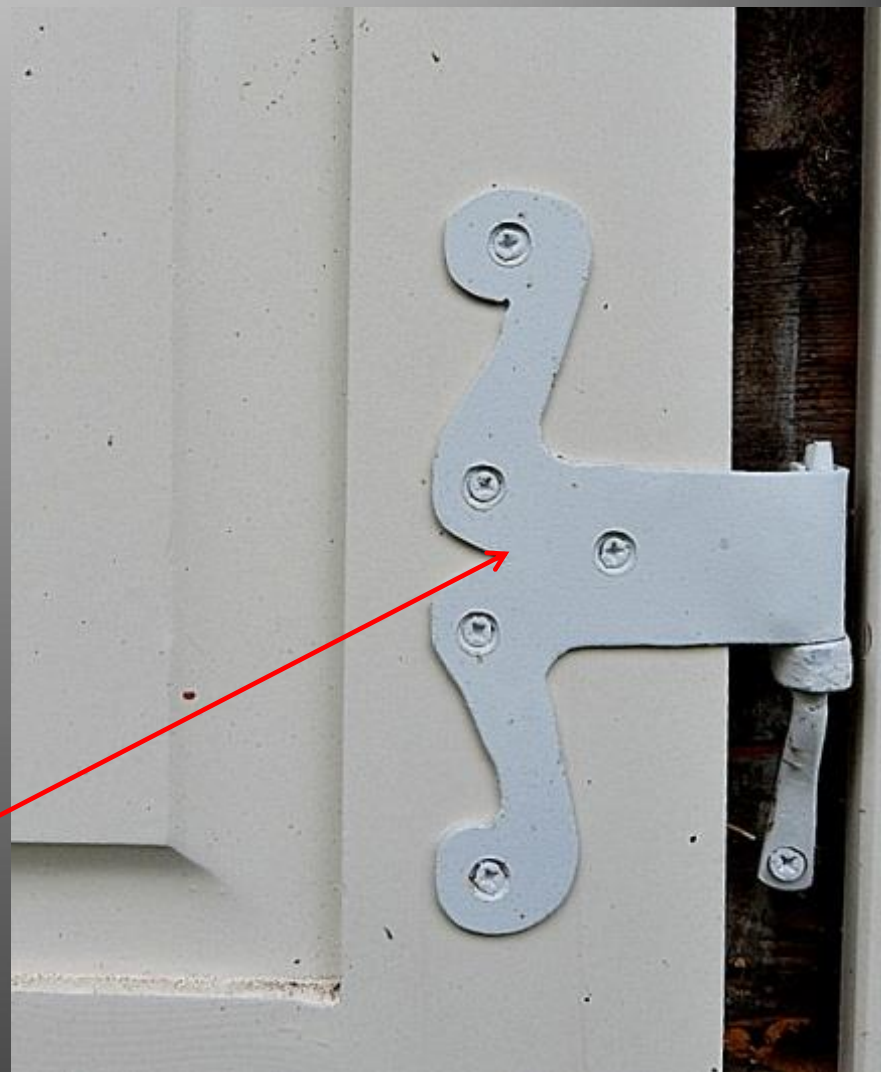
THE ORIGINAL PARTS OF WINDOWS (PLACED BEHIND THE HOUSE) WITH ORIGINAL GLAZING ARE IN A VERY GOOD CONDITION, BUT NOT USED.



BRAND NEW WINDOW SET, MADE SIMILAR TO ORIGINALS. INSTEAD OF USING LINSEED OIL PUTTY, GLASS IS FIXED TO MUNTINS WITH WOODEN LISTS, MUNTINS ARE MORE MASSIVE. PAINTING TECHNIQUE - CONTEMPORARY.



NEW HINGES ARE CLUMSY REPRODUCTION OF SMITH MADE ORIGINALS. RIDICULOUS SCREWS,.



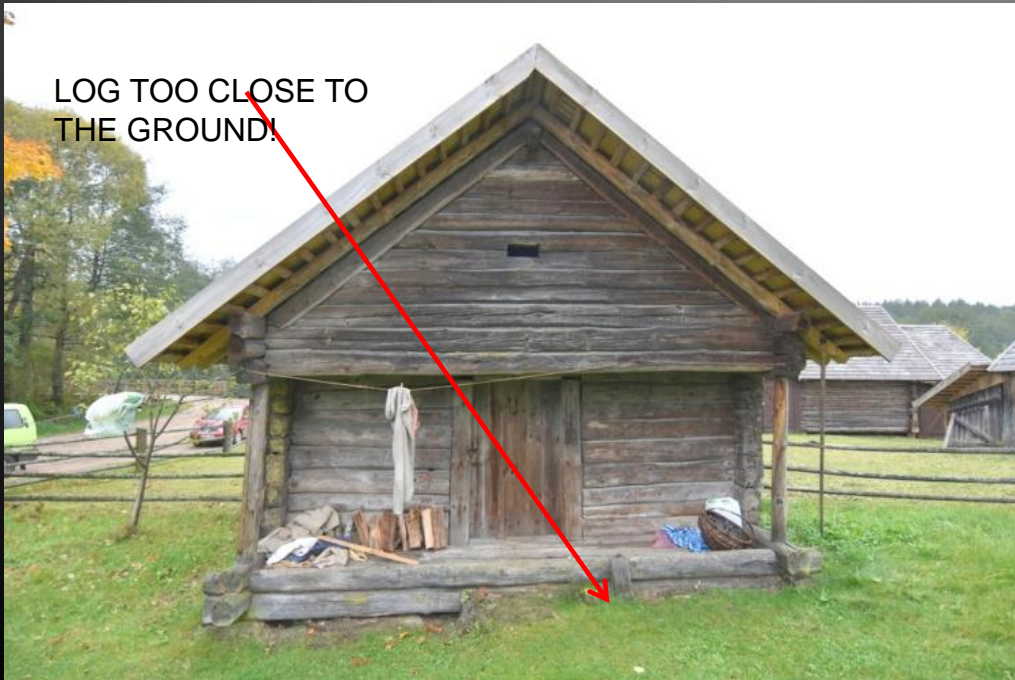


GENERAL IMPRESSION - HIGH AUTHENTICITY!

IMPROPER , NOT TRADITIONAL USE OF TOOLS –
INSTEAD OF AXE OR HAND-SAW - CHAINSAW
USED.



LOG TOO CLOSE TO
THE GROUND!

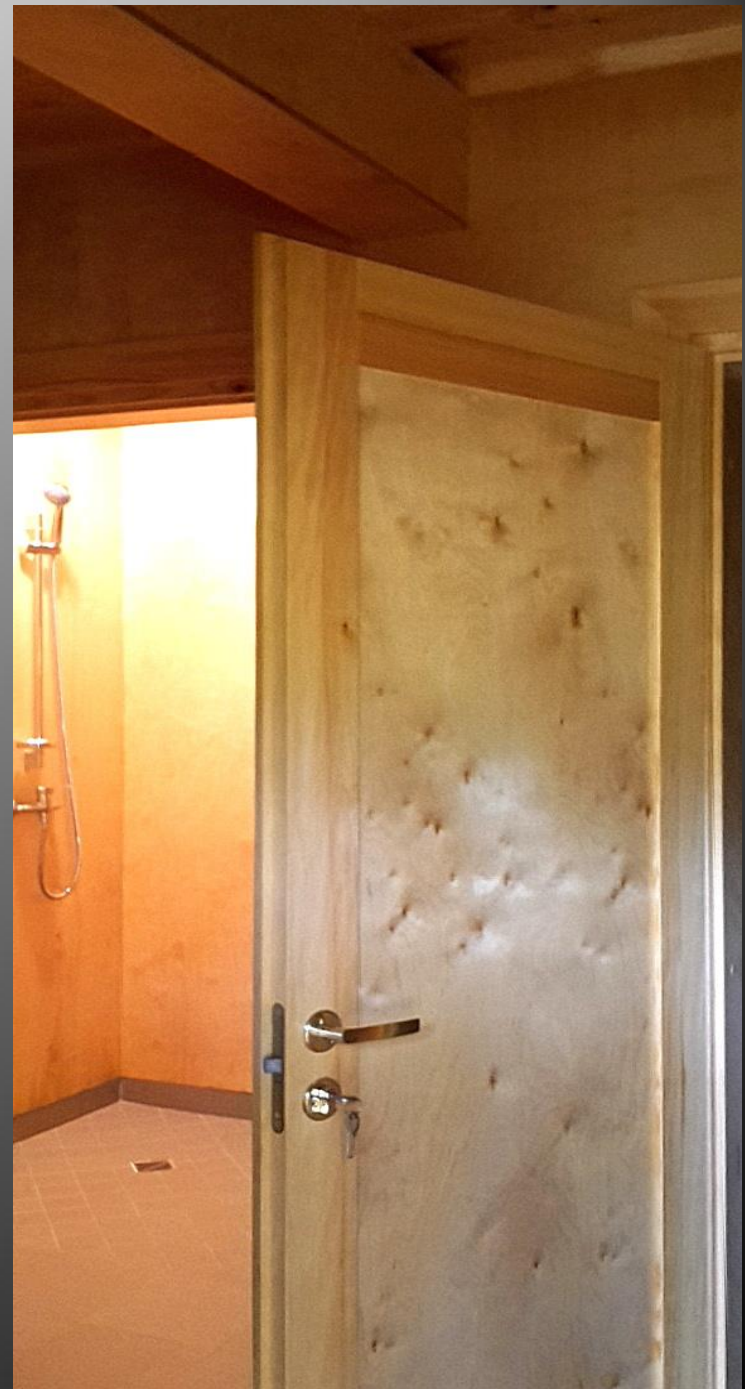


SALOS
ETHNO – ARCHITECTURAL VILLAGE



EXCELLENT
SURFACE ,
AUTHENTIC
PAINTING !

VERY
ADEQUATE
NEW DOOR
SOLUTIONS -
SIMPLE,
PRACTICAL,
SMART!





HARMONIC IMPRESSION CREATED, HIGH LEVEL OF AUTHENTICITY SAVED.
EXCHANGED WOOD ELEMENTS ARE NOT CONTRASTING. TRANSPARENT, TOLERANT TONING USED.





VERY GOOD
WOODWORK!
TRADITIONAL TOOLS
USED , PROFICIENT
JOINTS.

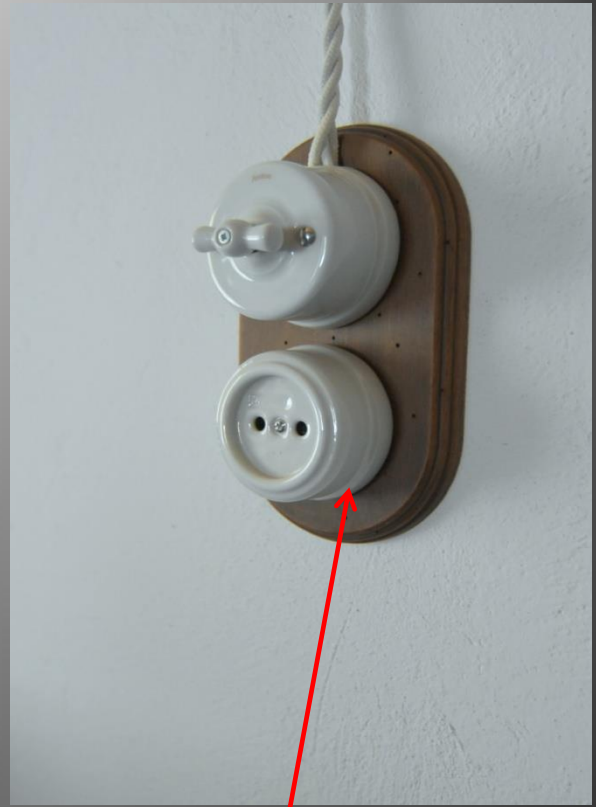
GOOD EXAMPLE WHERE
EVERYTHING IS WELL
DONE!





AUTHENTIC WINDOW SAVED,
APPROPRIATE MANNER OF
PAINTING WINDOWS IN THE
COUNTRYSIDE.





GOOD CHOICE OF AUTHENTIC SWITCHES!

MAYBE AUTHENTIC FLOOR SURFACE TREATED AND PAINTED
A BIT TOO GLOSSY?
(IS THIS FLOOR COLOR REALLY TYPICAL FOR THE COUNTRY
HOUSE OF THE FIRST HALF OF THE 20TH CENTURY?)



AUTHENTIC
SHAPE OF
PLASTERED
SURFACES





EXCELLENT AUTHENTICITY OF SURFACES!

PALDIES PAR UZMANĪBU!

THANK YOU FOR YOUR
ATTENTION!